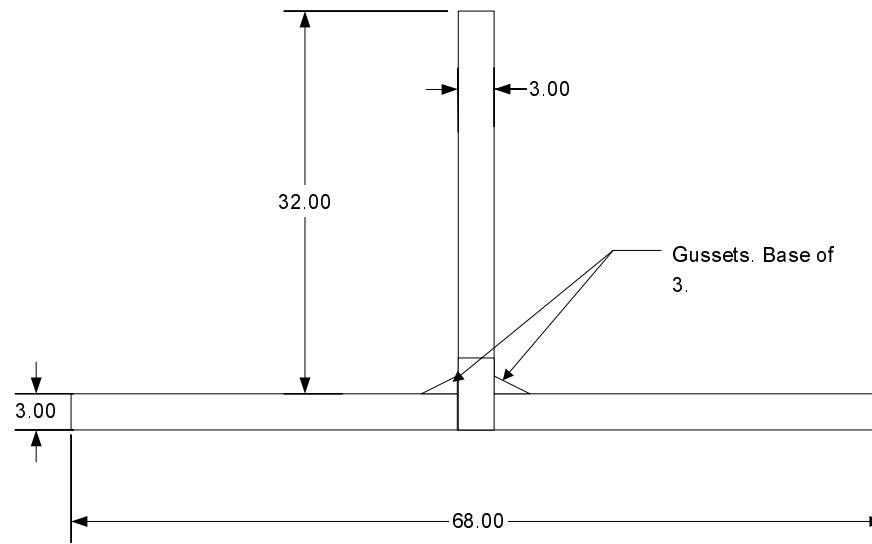
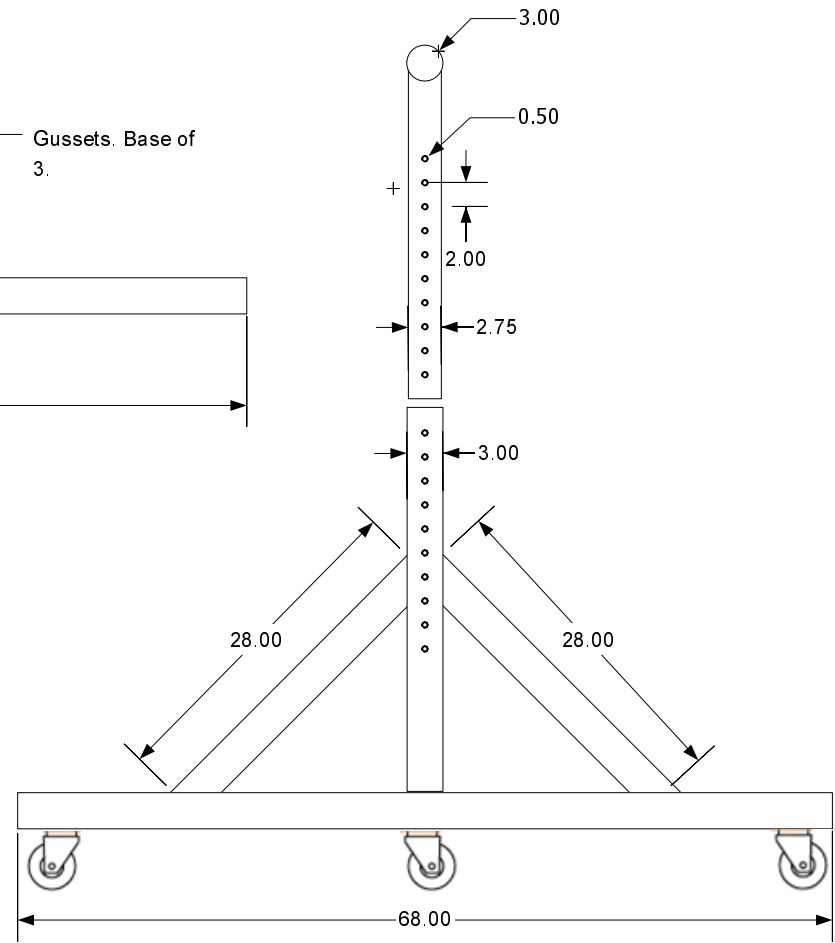


Side View



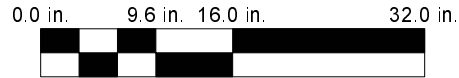
Top View



Front View

Gusset. Max base length of 3 in.

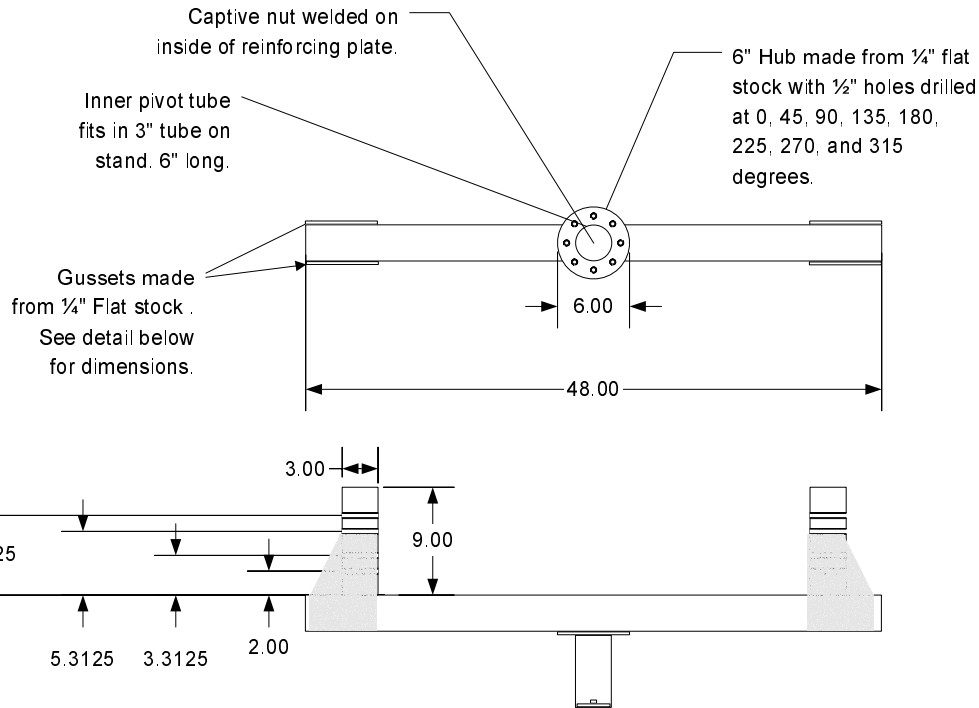
Gussets. Base of 3.



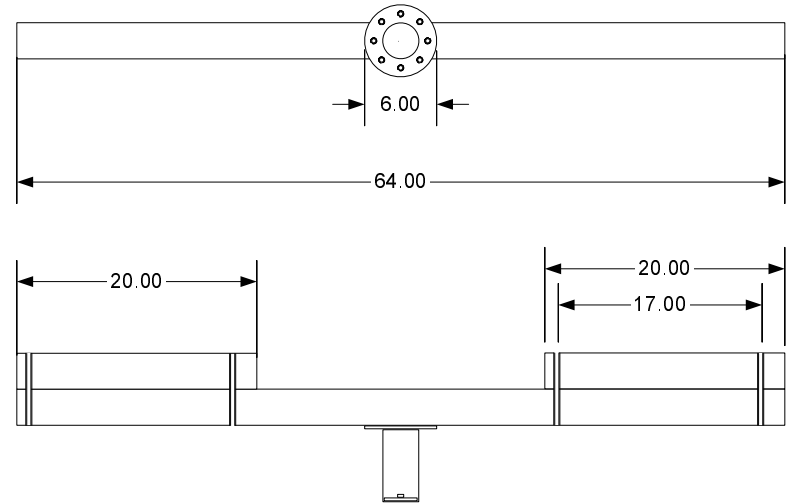
TITLE <b>ROTISSERIE</b>		DRAWN BY <b>DAVID HOGAN</b>		<b>QUANTITY 2 REQUIRED</b>	
DESCRIPTION ADAPTATION OF THE ROTISSERIE DESIGNED BY CHARGERBILL, MEMBER OF WWW.DODGE-CHARGER.COM					
DATE 28/03/2003	SIZE	FSCM NO	DWG NO 1	REV	
SCALE 1/16 : 1		SHEET 1 OF 2			

ITEM	QTY.	PART NO.	DESCRIPTION
1	1	3" square tube	68"
2	2	3" square tube	32"
3	3	2.75" Square Tube	28"
4	1	3" O'D Tube	6"
5	1	0.25" Flat Stock	3X4X5" Triangular Gusset
6	3		Casters

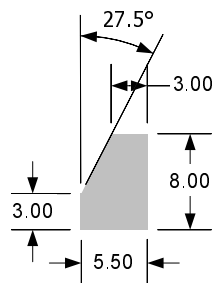
### Front Assembly



### Rear Assembly



### Gusset Detail



0.0 in. 9.6 in. 16.0 in. 32.0 in.



TITLE <b>ROTISSERIE</b>		DRAWN BY <b>DAVID HOGAN</b>		<b>QTY 1 EACH</b>	
DESCRIPTION ADAPTATION OF THE ROTISSERIE DESIGNED BY CHARGERBILL, MEMBER OF WWW.DODGE-CHARGER.COM					
DATE 28/03/2003	SIZE	FSCM NO	DWG NO 1	REV	
SCALE 1/16 : 1		SHEET 2 OF 2			

ITEM	QTY.	PART NO.	DESCRIPTION
1	2	0.25" Flat Stock	6" Diameter Plate with 1/2" holes
2	2	2.75" OD tube	6" (to fit inside of tube on top of stand)
3	2	1/4" Flat Stock	Round plate to fit inside of tube
4	1	3" Square Tube	48"
5	1	3" Square Tube	64"
6	2	3" Square Tube	9"
7	2	3" Square Tube	20"
8	2	Nut	Captive nut inside of support plate
9	2	1/4" Flat Stock	Gusset (See detail)